

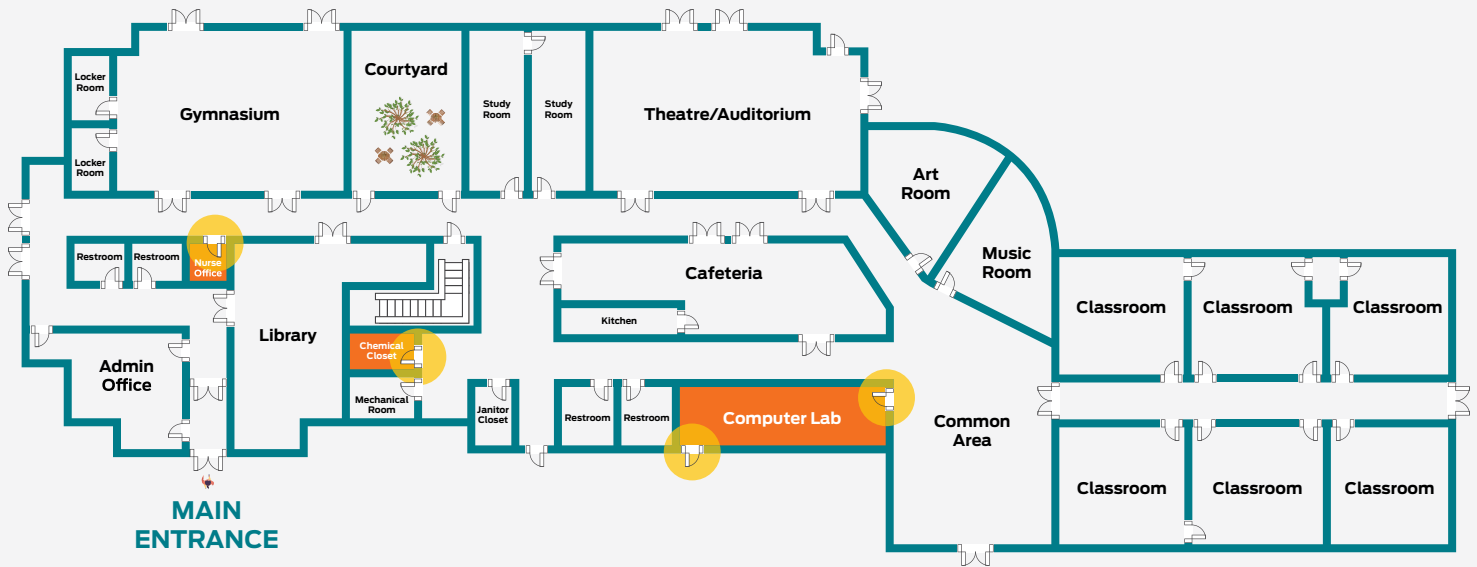
# High Security Doors

These security recommendations are for areas that require a higher level of security, such as data and record storage, nurse's office or medicine closet, treasurer's office, and laboratories or chemical closets. These areas are usually only accessed by staff or with staff supervision.



 Learn best practices to secure this opening.

## Locate these openings:



## Operational requirements:



Door is usually secured when staff member is not present



Access is gained by a valid credential or key



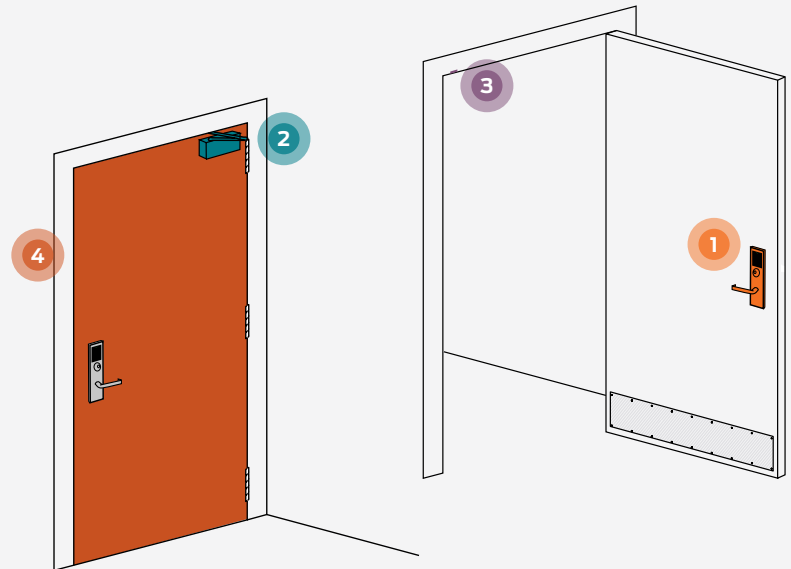
Free egress is always available



## Recommended products:

Here are some key components for securing high security areas.

For full solutions, specifications and recommendations, **contact us**.



## Electronic Access Control

Electronic access control allows staff to use their badge or other credential to easily access these always locked areas. It also allows for instantly issuing or deactivating cards and provides an audit trail of who accessed the space and when.

1



**Wired card reader or wireless electronic lock** for improved access control and the ability to track who gained access and when. Pair with smart card credentials for higher security over proximity and magnetic stripe cards, as well as improved key control.

2



A **door closer** is recommended to ensure door returns to locked, latched and secure position.

3



**Door position switch** and **latch bolt monitor** show the status of the door and latch so administrators know the status of the door in this high security area.

4



Consider **steel doors and frames** for higher levels of security, durability, and stronger lock reinforcements. Steel doors may have built-in conduit raceways to make wiring for access control easier.



If a **mechanical locking solution** is preferred, choose a lock with function that is always locked (storeroom function) or with a deadbolt.



Use patented, restricted **keys** and **cylinders** for improved key control and ensure you have a key management system where each key distributed is logged and documented.



To contact an Allegion security consultant, visit  
[us.allegion.com/schoolsecurity](https://us.allegion.com/schoolsecurity)

### About Allegion

Allegion (NYSE: ALLE) is a global pioneer in seamless access, with leading brands like CISA®, Interflex®, LCN®, Schlage®, SimonsVoss® and Von Duprin®. Focusing on security around the door and adjacent areas, Allegion secures people and assets with a range of solutions for homes, businesses, schools and institutions.

For more, visit [www.allegion.com](https://www.allegion.com)



**ALLEGION™**

© 2023 Allegion  
015662, Rev. 07/23

[www.allegion.com/us](https://www.allegion.com/us)